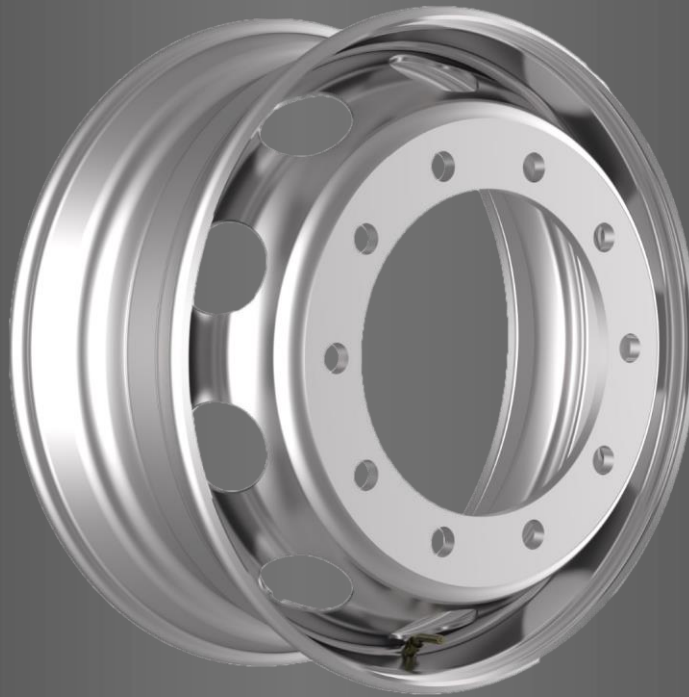




Lightweight Steel Wheels



Lightweight Steel Wheels with New
Patented Rim Contour

A new generation of Russian steel wheels

Accuride is pleased to present a new Russian generation of lightweight steel wheels - lighter weight - higher payload - easy installation - lower fuel consumption - 100% made in Russia. These wheels are designed for trucks and buses.

Accuride (Zainsk) is the first wheel plant in Russia to produce lightweight wheels made of high-strength low-alloy steel grade S420MC. As part of this innovative project, the technology for the production of lightweight wheels of the 3rd generation (DCW-G3) was introduced, which will allow the use of the entire Russian range of products for future generations of trucks. The patented DCW-G3 technology is also fully compatible with existing trucks and buses.

Starting from the 2nd quarter of 2022, 22.5x7.50U, 8.25U and 9.00U wheels will be produced, which are up to 8.5 kg lighter than previous generations. As a result of the implementation, the entire range of truck wheels is completely modernized, replacing the old wheels of the 1970s with an internal valve with the modern DCW-G3, ensuring compatibility with brake discs and the Tire Pressure Monitoring System (TPMS).

Benefits for consumers

- Full compatibility with previous, current and future generations of vehicles
- Lighter weight but more robust due to optimized design



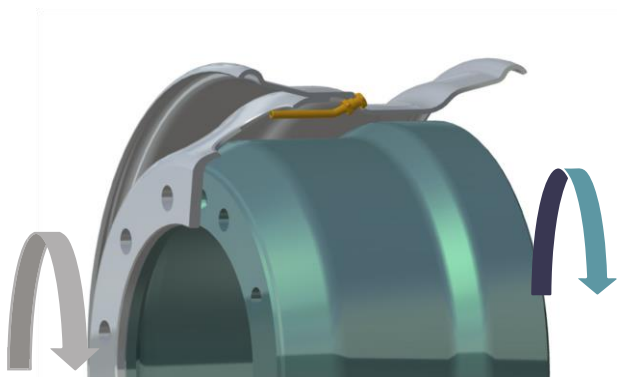
Internal Wheel valve (DCW-G3)



External Valve Wheel (DCW-G3)

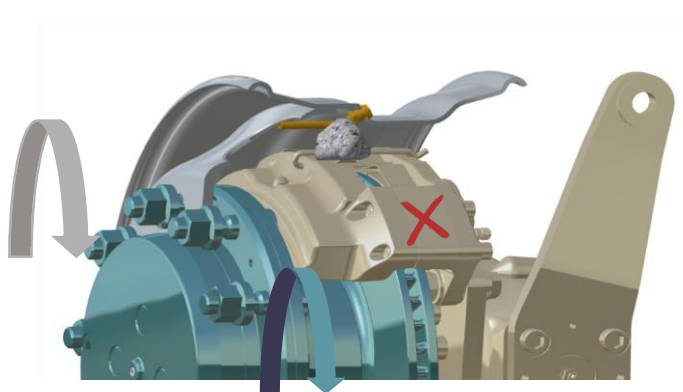
SPECIFICATION

Wheel size	Part Number	Center Hole Diameter	Location diameter Mounting holes	Number of mounting holes	Bolt size, mm	Inset, mm	Offset, mm	Weight, kg	Max. Load, kg	Valve
22.5 x 7.50	15107	281	335	10	M22	152.5	165	36.0	3.250	V3-22-1
22.5 x 8.25	36374/15098	281	335	10	M22	157.5	170	37.0	3.550/3.750	V3-22-1
22.5 x 9.00	15099	281	335	10	M22	162.5	175	37.5	4.000	V3-22-1
22.5 x 9.00 HD	35364	281	335	10	M22	161.0	175	44.2	4.500	V3-22-1



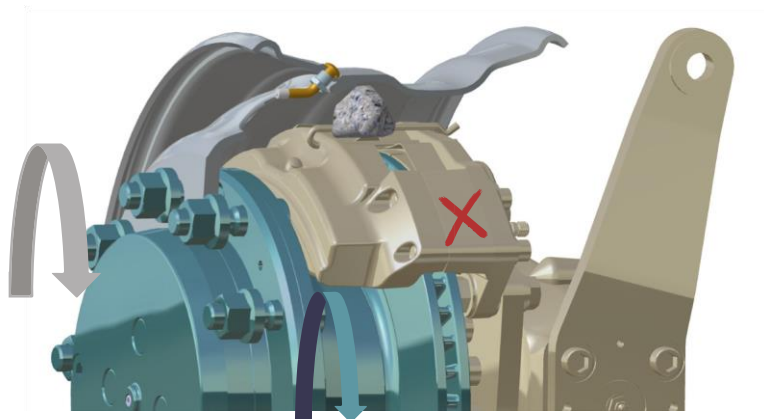
Wheel with internal valve

Wheels with an internal valve are ideal for axles equipped with drum brakes - the wheel and brake rotate at the same speed.



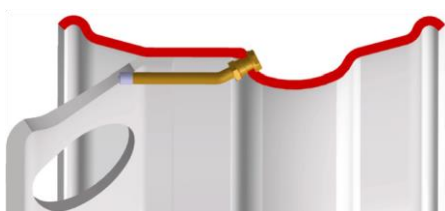
On axles with disc brakes, the brake disc and wheel rotate at the same speed, but the brake caliper is stationary. When using internal valve wheels with disc brakes, there is a high risk that rock or other objects could damage the valve by getting stuck between the brake caliper and the rotating rim.

Wheel with external valve



In the new generation of wheels, the valve is located outside the disc and, therefore, the possibility of damage to it by any foreign objects is excluded.

The history of generations of profiled wheels



DCW-G1 – old generation
Wheel with internal valve



DCW-G2 – old generation
Wheel with external valve with hump



DCW-G3 – new generation
Wheel with external valve without hump